

124°14'E

124°16'E

124°18'E

124°20'E

124°22'E

124°24'E

LEGEND

- Municipal Boundary
- Barangay Boundary
- Rivers and Creeks
- National Road
- Provincial Road
- Municipal Road
- Barangay Road

NPAAAD

- All Irrigated Areas
- All Irrigable Lands
- Built-up Areas
- Alluvial Plains
- Agro-Industrial Croplands
- Ecologically Fragile Agricultural
- Forest/Watershed Area



Republic of the Philippines
PROVINCE OF BOHOL
City of Tagbilaran



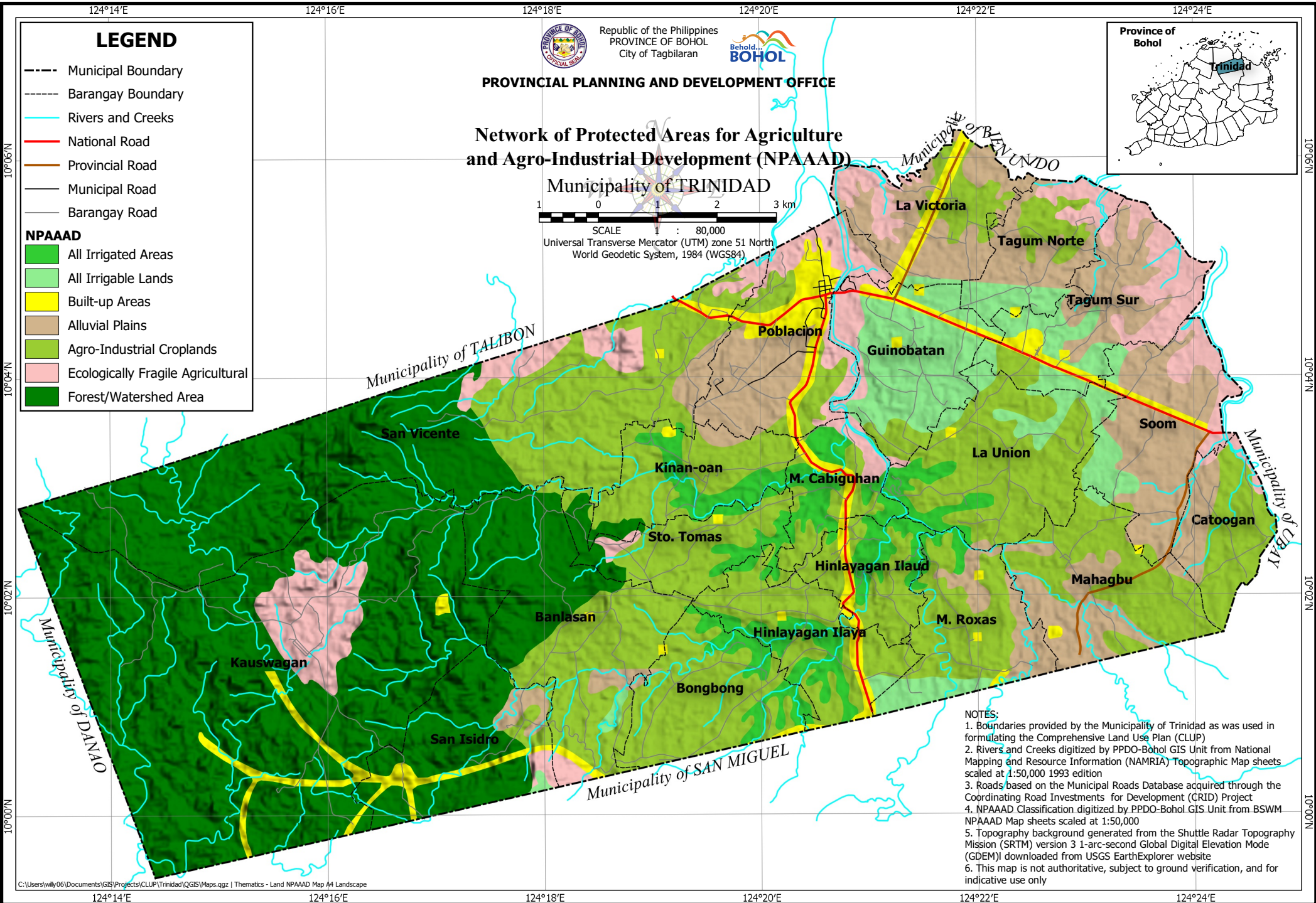
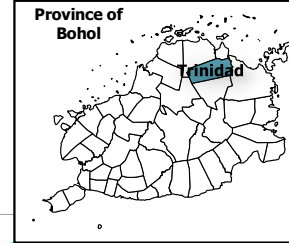
PROVINCIAL PLANNING AND DEVELOPMENT OFFICE

Network of Protected Areas for Agriculture and Agro-Industrial Development (NPAAAD)

Municipality of TRINIDAD



SCALE 1 : 80,000
Universal Transverse Mercator (UTM) zone 51 North
World Geodetic System, 1984 (WGS84)



- NOTES:
1. Boundaries provided by the Municipality of Trinidad as was used in formulating the Comprehensive Land Use Plan (CLUP)
 2. Rivers and Creeks digitized by PPDO-Bohol GIS Unit from National Mapping and Resource Information (NAMRIA) Topographic Map sheets scaled at 1:50,000 1993 edition
 3. Roads based on the Municipal Roads Database acquired through the Coordinating Road Investments for Development (CRID) Project
 4. NPAAAD Classification digitized by PPDO-Bohol GIS Unit from BSWM NPAAAD Map sheets scaled at 1:50,000
 5. Topography background generated from the Shuttle Radar Topography Mission (SRTM) version 3 1-arc-second Global Digital Elevation Mode (GDEM) downloaded from USGS EarthExplorer website
 6. This map is not authoritative, subject to ground verification, and for indicative use only

124°14'E

124°16'E

124°18'E

124°20'E

124°22'E

124°24'E